

ROBIN COURT PARK PLAY COURT CONSTRUCTION PROJECT

Project Information Package

30 Robin Court



LATITUDE 67 LTD



landscape planning
LANDSCAPE ARCHITECTS

August 26, 2024

Information Package Overview

1. Project Team
2. Robin Court Park Site Information
 - Context Map
 - Existing Conditions
3. Play Court Construction Project Scope
4. Preliminary Concept
5. Multi-use Basketball Court / Materials /
Furnishings
6. Next Steps





PROJECT TEAM

Project Team

City of Barrie Team:

Karen Lilienthal, Landscape Architectural Planner (Design Project Lead)

Bill McGregor, Landscape Architectural Planner (Construction Project Lead)

Build Team: Latitude 67

Paul Degli Angeli, President

Miranda Pasick, Project Manager

Design Team: Landscape Planning Ltd.

John Shank, President

Holly MacAlpine, Landscape Architectural Designer

Daniel Malovic, Landscape Architectural Designer; Intern

Link to Project Website: <https://www.buildingbarrie.ca/robincourtspark>





ROBIN COURT PARK SITE INFORMATION

Context Map



Existing Conditions

Existing Site Features:

- Playground
- Open Space
- Seating
- Signage
- Tree Plantings





PLAY COURT CONSTRUCTION PROJECT SCOPE

Play Court Construction Project Scope

The design intent for the redevelopment of **Robin Court Park** is:

- Provide users with half-sized multi-use basketball court
- Provide users with supporting site furnishings
- Provide accessible park walkway linkages

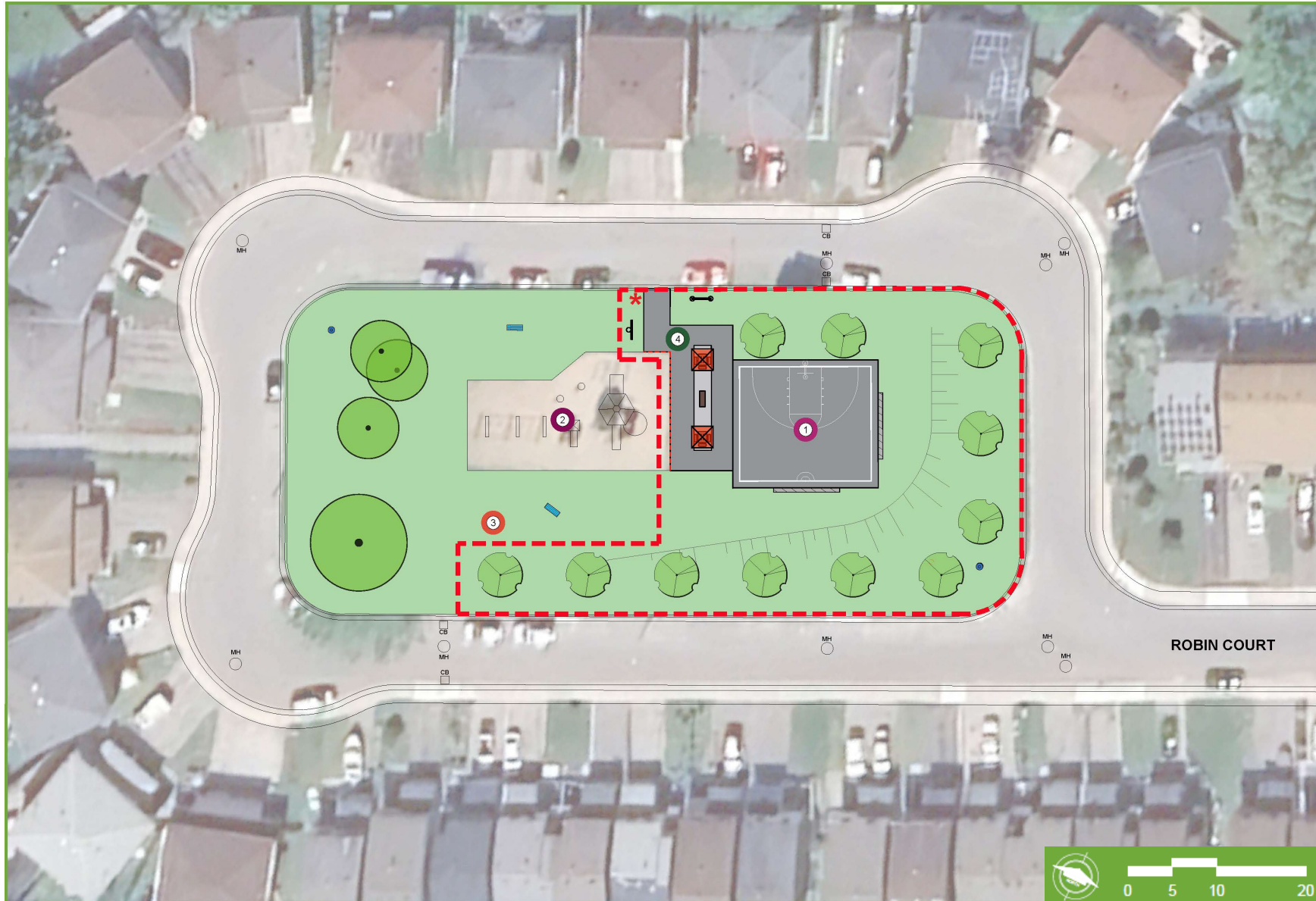
This redevelopment aims to develop modern park facilities that will improve the overall accessibility and functionality of this open space.





PRELIMINARY CONCEPT

Robin Court Park Concept



LEGEND

- LIMIT OF PROJECT REDEVELOPMENT
- NEW PLAY EDGE
- ASPHALT PAVING
- CONCRETE PAVING
- SOD
- CONCRETE SEAT WALL
- EXISTING TREE TO REMAIN
- DECIDUOUS TREE
- EXISTING HYDRANT TO REMAIN
- RELOCATED LITTER RECEPTACLE
- RELOCATED PARK SIGN
- RELOCATED PARK RULES SIGN
- PROPOSED BACKLESS BENCH
- EXISTING BENCH TO REMAIN
- GATHERING TABLE WITH UMBRELLA
- EXISTING SLOPE TO REMAIN

KEYS

- 1 HALF-SIZED UNLIT BASKETBALL COURT
- 2 EXISTING PLAYGROUND TO REMAIN
- 3 EXISTING OPEN LAWN TO REMAIN
- 4 3m WIDE ASPHALT WALKWAY

Concept Description

This concept includes a half-sized, unlit multi-use basketball court, paved walkways, and tree plantings. The basketball court's placement next to the playground facilitates easy supervision of both areas. A central plaza provides seating for visitors, enhancing the space as a gathering area for relaxation and socializing.





**MULTI-USE BASKETBALL COURT / MATERIALS /
FURNISHINGS**

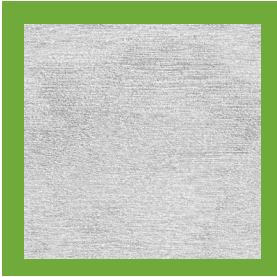
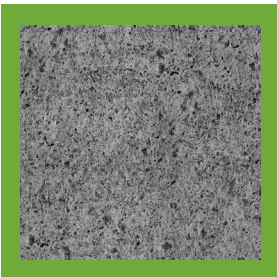
Multi-use Basketball Court / Materials / Furnishings



FURNISHINGS

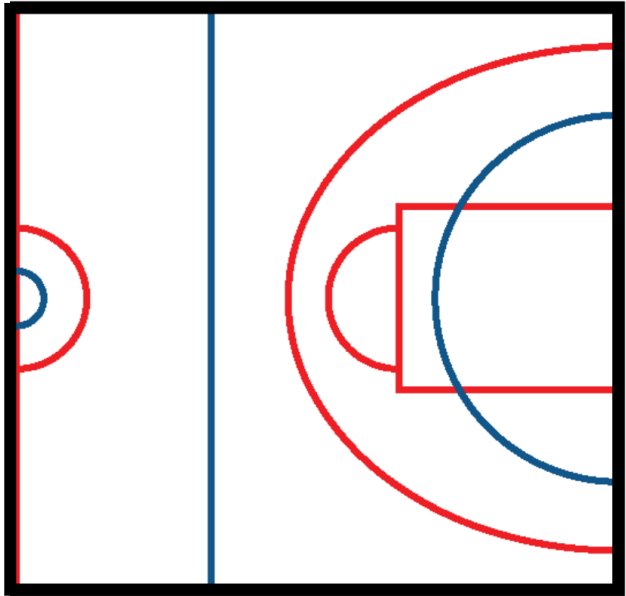


SEATWALL



SURFACE MATERIALS

MULTI-USE BASKETBALL COURT



BASKETBALL



BALL HOCKEY





NEXT STEPS

Next Steps

Opening of Online Survey: August 26th, 2024

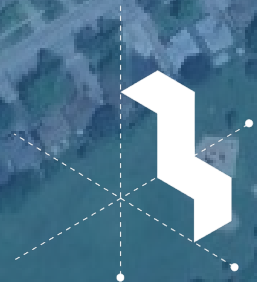
Closing of Online Survey: September 8th, 2024

Link to Project Website: <https://www.buildingbarrie.ca/robincourtspark>

Please direct any project-specific questions or feedback to the City of Barrie at <https://www.buildingbarrie.ca/robincourtspark>



Thank You



LATITUDE 67 LTD

