

# CARTWRIGHT PARK PLAY COURT CONSTRUCTION PROJECT

Project Information Package

45 Cartwright Drive



LATITUDE 67 LTD



landscape planning  
LANDSCAPE ARCHITECTS

August 26, 2024

# Information Package Overview

---

1. Project Team
2. Cartwright Park Site Information
  - Context Map
  - Existing Conditions
3. Play Court Construction Project Scope
4. Preliminary Concepts
5. Multi-use Basketball Court / Materials /  
Furnishings
6. Next Steps





**PROJECT TEAM**

# Project Team

---

## City of Barrie Team:

Karen Lilienthal, Landscape Architectural Planner (Design Project Lead)

Bill McGregor, Landscape Architectural Planner (Construction Project Lead)

## Build Team: Latitude 67

Paul Degli Angeli, President

Miranda Pasick, Project Manager

## Design Team: Landscape Planning Ltd.

John Shank, President

Holly MacAlpine, Landscape Architectural Designer

Daniel Malovic, Landscape Architectural Designer; Intern

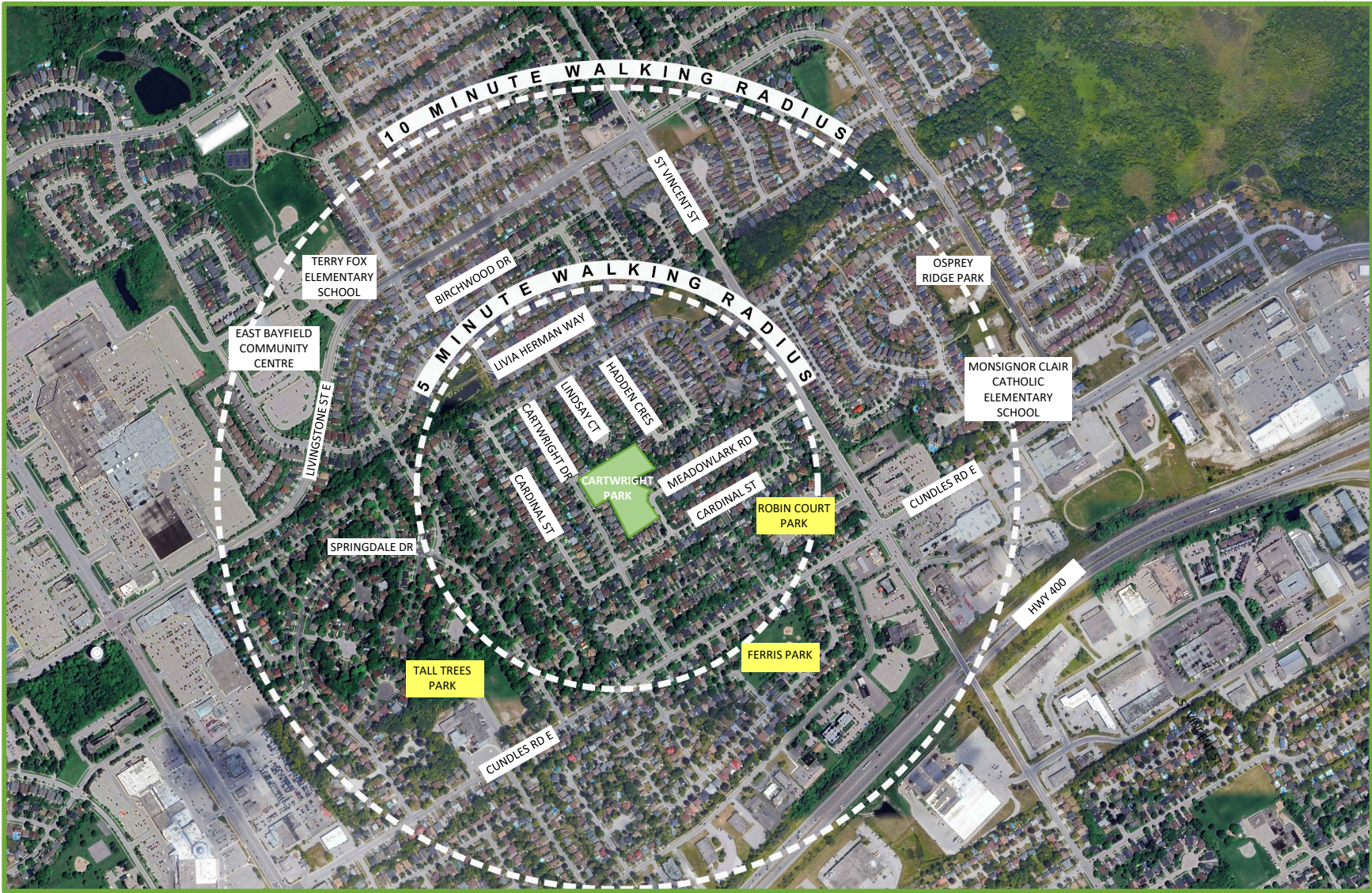
Link to Project Website: <https://www.buildingbarrie.ca/cartwrightpark>





## **CARTWRIGHT PARK SITE INFORMATION**

# Context Map



# Existing Conditions

## Existing Site Features:

- Playground
- Soccer Field
- Walkways
- Seating
- Signage
- Tree Plantings





# **PLAY COURT CONSTRUCTION PROJECT SCOPE**

# Play Court Construction Project Scope

---

The design intent for the redevelopment of **Cartwright Park** is:

- Develop a conceptual park plan, demonstrating phasing potential;
- Provide users with a full-sized multi-use basketball court (suitable for flooding);
- Provide users with supporting site furnishings (seating);
- Provide additional park walkway linkages

This redevelopment aims to develop modern park facilities that will improve the overall functionality of this open space while permitting future phasing potential.





## **PRELIMINARY CONCEPTS**

# Concept 1



**LEGEND**

- LIMIT OF PROJECT
- ASPHALT PAVING
- CONCRETE PAVING
- SOD
- EXISTING TREE TO REMAIN
- PROPOSED DECIDUOUS TREE
- POTENTIAL FUTURE DECIDUOUS TREE
- EXISTING PARK BENCH TO REMAIN
- EXISTING PARK SIGN TO REMAIN
- EXISTING MANHOLE TO REMAIN
- ✖ EXISTING LITTER RECEPTACLE TO REMAIN
- EXISTING HYDRANT TO REMAIN
- PROPOSED HYDRANT
- PROPOSED BENCH
- POTENTIAL FUTURE GATHERING TABLES
- EXISTING VEGETATION TO REMAIN

**KEYS**

- 1 PROPOSED FULL-SIZED UNIT MULTI-USE BASKETBALL COURT
- 2 POTENTIAL FUTURE GATHERING AREA
- 3 POTENTIAL FUTURE PROGRAMMED AREA
- 4 POTENTIAL FUTURE NATURALIZED AREA
- 5 POTENTIAL FUTURE 3m WIDE ASPHALT WALKWAY
- 6 PROPOSED 3m WIDE ASPHALT WALKWAY
- 7 EXISTING OPEN SPACE TO REMAIN
- 8 EXISTING WALKWAY TO REMAIN

**NOTE:** ALL POTENTIAL FUTURE WORKS SHOWN HERE ARE FOR DESIGN INTENT ONLY AND ARE NOT REFLECTIVE OF THE FINAL DESIGN. POTENTIAL FUTURE AMENITIES ARE SUBJECT TO AVAILABLE FUNDING.

# Concept 2



# Concept Descriptions

---

**Concept 1** features a full-sized, unlit multi-use basketball court (suitable for flooding), paved walkways, and tree plantings. Locating the court next to the playground allows for easy supervision of both play areas. A central plaza offers seating for those using the basketball court, creating a communal space for relaxation and social interaction.

**Concept 2** features a full-sized, unlit multi-use basketball court (suitable for flooding) along the Meadowlark Road frontage. The design incorporates paved walkways and tree plantings, with earth berms and additional trees providing a buffer between the court and adjacent homes. The court is positioned to create a clear separation from the existing playground, which delineates the different activity zones within the park.





**MULTI-USE BASKETBALL COURT / MATERIALS /  
FURNISHINGS**

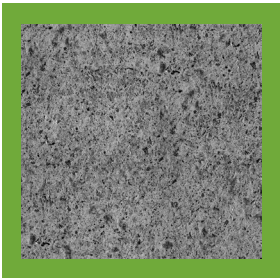
# Multi-use Basketball Court / Materials / Furnishings



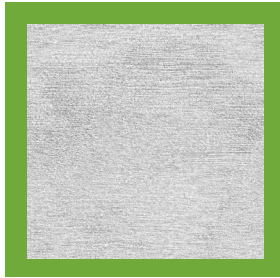
SITE FURNISHINGS



SOD



ASPHALT

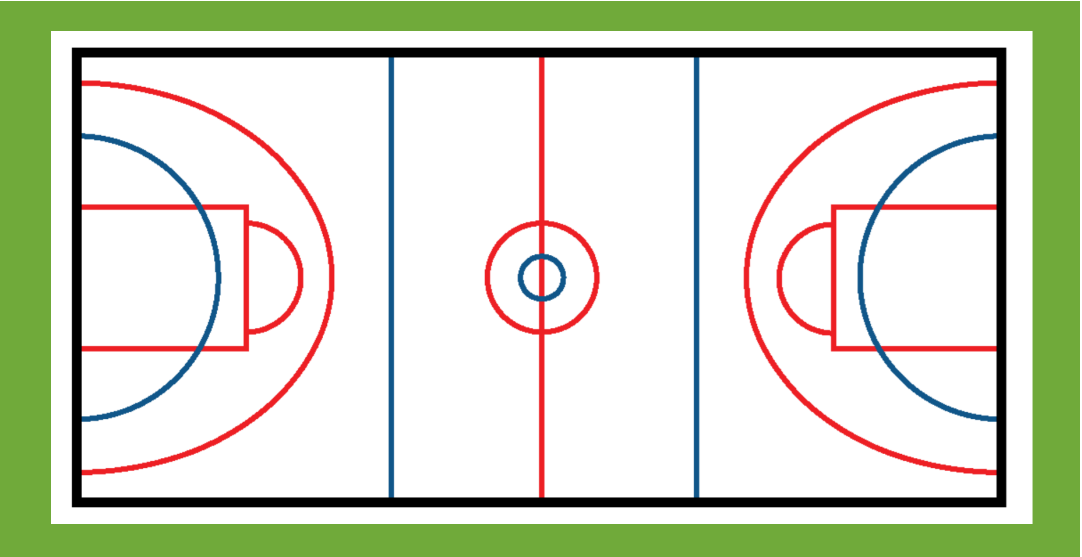


CONCRETE

SURFACE MATEIALS



NATIVE TREE PLANTING



 BASKETBALL

 BALL HOCKEY



MULTI-USE BASKETBALL COURT



**NEXT STEPS**

# Next Steps

---

**Opening of Online Survey:** August 26<sup>th</sup>, 2024

**Closing of Online Survey:** September 8<sup>th</sup>, 2024

**Link to Project Website:** <https://www.buildingbarrie.ca/cartwrightpark>

Please direct any project specific questions or feedback to the City of Barrie at <https://www.buildingbarrie.ca/cartwrightpark>



# Thank You



LATITUDE 67 LTD

